

VOLUME 14 ISSUE 1 APRIL 2026

GROW

BUSINESS

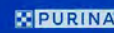
KC CHAMBER DIGITAL MAGAZINE



KANSAS CITY



POPULOUS



READY TO WELCOME?
KC Region
Preparing to Shine



AN INTERVIEW WITH
Kelly Carlson,
Arvest Bank



WELLNESS IN KC
Evolving,
Adapting



“I came
for a new heart.
I left with a
new appreciation.”

The most comprehensive solid organ transplant program in the region.

It's hard to stay calm when you're about to get a new heart. But in the faces of my transplant team, I see thousands of hours of training. I see the confidence of having done this more than anyone else. Then, just before I'm wheeled into the OR, I see a celebration. For me. For my future. These people aren't here to just provide a new heart. They're here to bring new life.

This is what makes us who we are.



THE UNIVERSITY OF
KANSAS HEALTH SYSTEM



CONTENTS

6

AN INTERVIEW WITH
Kelly Carlson,
Arvest Bank

10

WELLNESS IN KC
Evolving,
Adapting

16

READY TO WELCOME?
KC Region
Preparing to Shine

21

NEW MEMBERS
Milestone Anniversaries,
President's Circle
& Leadership Circle

23

MEMBER NEWS



Page 10

GROW KC designed by Ridpath Creative Partners www.ridpathcreative.com

On the cover: World Cup Countdown Clock at Kansas City International Airport. Photo by Roger Ridpath, Ridpath Creative Partners.



The Binder Firm
Elder and Family Law

TOGETHER WE PROTECT YOUR FAMILY'S FUTURE

- Estate Planning
- Guardianship
- Special Needs Planning
- Medicaid Planning

 **816 866 8264**



Kelisen Binder
Elder Law Attorney
www.thebinderfirm.com



PRESIDENT & CEO'S POINT OF VIEW

Kansas City didn't land the FIFA World Cup 2026™ by accident. We built toward this moment, piece by piece, investment by investment, partnership by partnership. And now, with just weeks to go before the world arrives in mid-June, this will be my final opportunity in these pages to say: this is our moment.

This is about more than hosting matches. It is about demonstrating who we are as a region and how we show up—together—on a global stage.

Over the past several years, Greater Kansas City has quietly assembled the building blocks that make this possible. From the modernization of our airport to the expansion of the streetcar, from world-class sports facilities to a revitalized riverfront, we have invested in the kind of infrastructure that signals readiness. But just as important, we have built something less visible and far more powerful: a culture of collaboration.

That collaboration is no longer just preparation; it is now execution.

Through our partnership with KC2026, Visit KC, the Kansas City Sports Commission, and communities across both states, we have aligned business leaders, civic organizations, and local governments around a shared goal. The KC Chamber has worked to ensure businesses—from Main Street to major employers—are ready to welcome the world, not just as spectators, but as participants in this moment.

Because readiness is not just operational. It is cultural. It is economic. And it is deeply local.

Efforts like the KC Game Plan and the Community Playbook are already equipping businesses with practical tools—from digital marketing to cybersecurity to customer readiness—so they can fully engage in the opportunities ahead. At the same time, work with partners like the World Trade Center-Kansas City and Welcom-

ing KC is helping prepare our region culturally and linguistically, ensuring every visitor feels not just accommodated, but genuinely welcomed.

We are also thinking beyond match days.

The World Cup will bring global attention, but it will also create moments in between, opportunities for activation across our entire region. From watch parties and cultural programming to neighborhood-level experiences, this is a chance for communities from Johnson County to the Northland, from Lawrence to Lee's Summit, to tell their own story as part of a larger narrative. And that narrative should be unmistakable: Kansas City is a place where people come together to get things done.

Of course, with opportunity comes responsibility. Transportation, safety, and coordination across jurisdictions will be tested in real time. That is why efforts like ConnectKC26 and regional public safety planning are so critical. Success will depend on continued alignment, not just among institutions, but among people.

Because ultimately, readiness is not defined by a checklist. It is defined by how we respond in the moment, how we welcome a visitor, support a business, solve a problem, and represent our community.

The World Cup will last a few weeks. The impact, if we get this right, will last much longer.

So as we enter these final weeks of preparation, my message is simple: lean in. Show up. Be part of it.

The world is coming—and this is our chance to meet it with the very best of who we are. 🏈

JOE REARDON @JReardonKC @KCChamber



When Arvest Bank named Kelly Carlson president for the Greater Kansas City market, it marked more than a leadership transition. It introduced a leader grounded in curiosity, resilience, and a belief that banking, at its core, is about relationships, not transactions.

Carlson's path into banking began with a setback. After a business loan was denied early in his career, he chose to understand why. That decision led him into commercial lending and ultimately into a career focused on helping businesses grow. "Commercial banking is the ultimate vantage point," Carlson says. "You get to partner with organizations of all sizes and help build something meaningful."

Just months into his Kansas City tenure, Carlson is leaning into what he calls the region's "incredible economic momentum." From partnerships with organizations like the KC Current to community engagement, he sees Arvest as a contributor to growth. "We want to be a collaborative engine," he says, "helping provide the financial architec-



A CONVERSATION WITH KELLY CARLSON

*President and CEO,
Arvest Bank, Greater Kansas City*

ture that allows businesses to thrive.”

That perspective reflects an evolution in his leadership style. Still results-driven, Carlson has shifted from a tactical approach to one rooted in collaboration. “The best path forward is rarely a straight line drawn by one person,” he notes. Today, he prioritizes diverse perspectives and flexibility, ensuring his team advances with clarity and shared ownership.

Two experiences shaped that approach. The first is personal: being a husband and father, which deepened his empathy as a leader. The second was a 2019 rock-climbing accident that resulted in a broken tibia. “I was so focused on the goal that I ignored warning signs,” he reflects. “It didn’t change my ambition, but it changed how I pursue it.” The takeaway: better outcomes come from listening, adjusting, and moving forward together.

That philosophy carries into how Carlson views modern banking. As digital transformation accelerates, he believes banks must balance innovation with human connection. “Technology should enhance convenience, but it can’t replace conversation,” he says. At Arvest, that means investing in tools like Live Teller systems while maintaining a relationship-first culture where customers are known and supported.

This approach is especially important for small businesses and entrepreneurs, key drivers of Kansas City’s economy. Carlson sees regional banks as both financial providers and strategic partners. By aligning treasury management, payments, and lending teams, Arvest delivers integrated solutions that support growth and protect against

risks like fraud. “We want to walk alongside businesses from day one to long-term success,” he says.

Carlson’s early impressions of Kansas City have reinforced that commitment. Since relocating, he and his family have immersed themselves in the community, visiting places like the Nelson-Atkins Museum of Art, attending events, and building connections through organizations like the KC Chamber. What stands out most is the region’s “big city, small town” dynamic, a blend of scale and connectivity that fuels collaboration.

That spirit, combined with opportunities like the FIFA World Cup 2026™, positions Kansas City for continued growth. Carlson sees this as a defining moment, not just for the city, but for how banks can support it. His focus is on aligning Arvest’s growth with the region’s trajectory and helping businesses prepare for what’s ahead.

Looking forward, Carlson believes the future of banking will be shaped by a dual mandate: advancing digital capabilities while deepening relationships. Technologies like AI and data analytics will play a role, but their value lies in enabling more personalized, proactive guidance.

Ultimately, Carlson’s vision is grounded in impact. “I want people to say we put everything we had into this community,” he says. “That we were a steady, trusted partner through both opportunities and challenges.”

In a city defined by collaboration and ambition, that approach positions both Carlson and Arvest Bank to help shape what comes next. ▀

POWERING THE AI ERA

The foundational dark fiber link between Kansas City enterprises and the region's premier data centers.

As **Kansas City emerges as the third fastest-growing tech market in the U.S.**, the infrastructure supporting it must be faster, more resilient, and more diverse than ever before.

At LSC, we provide the vital dark fiber link that brings the power of these high-density environments directly to your enterprise. Because we believe infrastructure is the heartbeat of a city, we are deeply invested in the community as a licensed public utility. We employ local experts who live here and understand KC's unique municipal landscape, ensuring our 35-mile underground metro ring is not just a route, but a dedicated bridge between Kansas City businesses and the critical innovation driving our future forward.

Don't Just Adopt AI. Own the Infrastructure Behind It.

Give your enterprise the ultimate competitive advantage with a premier AI-ready network that is live and ready for service today. **Scan to connect with our team and secure your digital future.**





THE **WR**
WHISKEY RANCH
EXPERIENCE

STEP OUTSIDE THE CITY INTO SOMETHING REAL

AUTHENTIC RANCH EXPERIENCES

TURNKEY, HOSTED PRIVATE EXPERIENCES BLENDING
MIDWESTERN RANCH LIFE WITH ELEVATED HOSPITALITY

EXPLORE THE EXPERIENCE >>>



WHISKEY RANCH

30 MINUTES SOUTH OF KC

HORSEBACK RIDING | LIVE ARENA DEMONSTRATION | CHEF-PREPARED BBQ | REAL MOMENTS
CORPORATE GROUPS | CLIENT ENTERTAINMENT | VISITING GUESTS



HEALTH & WELLNESS IN KANSAS CITY: REDEFINING CARE THROUGH CONNECTION, ACCESS, AND INTEGRATION

Kansas City's health and wellness sector is evolving to meet people where they are and helping them get where they want to go.

➤ **A**cross the Greater Kansas City region, the health and wellness industry is undergoing a meaningful transformation. Once defined by clinical care and episodic treatment, today's landscape is shaped by prevention, personalization, and a more integrated understanding of what it means to be well.

At the center of that shift is a growing recognition that health is not one-dimensional. It is physical, certainly, but also mental, behavioral, and deeply personal. Providers

are rethinking traditional models to better reflect the complexity of people's lives.

That evolution is evident in organizations like The Tasty Balance, Klā Sanctuary, and AIMwell Enterprise—three Kansas City-based businesses approaching wellness differently but sharing a goal: making care more accessible, sustainable, and rooted in real life.

At The Tasty Balance, that means helping clients reshape their relationship with food through a non-diet, intuitive eating approach.



“There’s a common misconception that dietitians are the ‘food police.’ In reality, our work is about helping people build trust with their bodies and develop a relationship with food that actually supports their life,” said Ariel Johnston, founder and dietitian.

At Klā Sanctuary, the focus shifts to the nervous system, creating space for rest and regulation through a bathhouse and therapeutic bodywork experience designed for regular use. “Klā Sanctuary is a space for intentional pause,” said Matthew Matsch, co-founder. “We’re building an environment where care can feel accessible, repeatable, and integrated into everyday life.”

AIMwell Enterprise expands access through community-rooted programming that blends movement, mindfulness, and connection. “We strive to bridge the gap between who has access to wellness and who doesn’t,” said Debonie Lewis, founder. “Everyone deserves to be well.”

Together, these approaches reflect a broader trend: consumers are seeking care that feels realistic and sustainable. In a world saturated with conflicting advice and constant stimulation, people are looking for clarity. “People are overwhelmed by the noise in health and wellness right now,” Johnston added. “Our role is to bring it back to what’s sustainable, care grounded in science and compassion.”

That demand is especially pronounced among individuals managing complex needs, from chronic conditions to stress and burnout. Many are also navigating fragmented systems that separate medical care, nutrition, and mental health support, fueling a push toward integration.

In Kansas City, that integration is taking shape. Some providers are bringing multiple disciplines together, while others are cre-

ating environments for intentional rest or extending care into workplaces and community spaces. “People are not only looking to relax, they’re also looking to feel like themselves again,” said Kathryn McCormick, co-founder of Klā Sanctuary.

This shift is also raising the bar for quality. Providers are emphasizing the importance of pairing treatments with education, support, and long-term planning. “Medications can be a helpful tool, but they’re not the full picture,” Johnston noted. “Without nutrition support and long-term planning, we risk prioritizing quick results over lasting health.”

At the same time, wellness is being re-defined. No longer viewed as an occasional luxury, it is increasingly seen as an ongoing investment, driving demand for accessible, consistent care. “You need it too,” Lewis added. “Health and wellness doesn’t have to be something reserved for another season of life. It can support you right now.”

For providers, that opportunity comes with challenges, including balancing accessibility with sustainability and scaling without sacrificing quality. Many Kansas City organizations are responding with creativity, expanding teams, leveraging virtual care, and building systems that support both clients and staff.

Even so, the region retains a distinct advantage: collaboration. Strong relationships and a shared commitment to outcomes define Kansas City’s approach and position it for what comes next. Growth will be driven by integration, bringing together clinical, behavioral, and human elements of care in seamless, sustainable ways. In Kansas City, health and wellness is no longer just about treatment. It is about connection to care, to community, and ultimately, to a better quality of life. ▾

STRATEGY-FIRST MARKETING CONSULTANCY

AI ISN'T YOUR PROBLEM.

Implementation is.



You don't need more tools. You need a better workflow.

Most businesses are stuck experimenting with AI — testing tools, chasing trends, and hoping something sticks. But without a clear strategy, nothing moves.

**That's where things break down:
between the idea and the execution.**

At Khanect the Dots, we help businesses turn AI into real execution. We don't just introduce tools. We build the systems, workflows, and clarity your team needs to actually use them.

WHAT WE DO

- AI Readiness Consults
- AI Workshops & Trainings
- AI Implementation Systems

**SCHEDULE YOUR AI READINESS
CONSULT NOW:**

khanectthedots.com/getstarted

USE CODE: TALKSTRATEGY20
for 20% OFF





MEMBER DISCOUNTS

Exclusive Savings for KC Chamber Members

We've leveraged the purchasing power of our 2,000 member businesses to bring you exclusive savings and opportunities.



Kansas City

HEALTH INSURANCE FOR SMALL BUSINESS

ChamberCHOICE is a suite of hand-picked health insurance products designed exclusively for KC Chamber members with 5-99 employees. Five health insurance options to choose from, and discounts on bundled dental/vision plans. Plus, defined contributions control your business's annual costs. Learn more at www.bluekc.com/chamberchoice.



EXCLUSIVE MEMBER PRICING

Exclusive access to national contract pricing, only for KC Chamber members. Check it out...

- One-stop shopping, online or in-store
- FREE next-day delivery (orders over \$50), and FREE returns
- It's all here! Save big on office supplies, promotional products, furniture and more.

Sign up today at www.chambersave.com/staples



The Payroll and HR technology from CBIZ will save you time and money. KC Chamber members save a minimum of 10% on Human Capital Management Services, plus unlimited hours of free HR support for the first year.

PAYROLL



Contact Bob Kelly, bkelly@cbiz.com or (816) 500-0514, for more information.

For more information, please contact David Prunte, prunte@kcchamber.com. or (816) 374-5401.

The KC Chamber's Cost Saving Benefits offer negotiated discounts on goods and services, based on the purchasing power of our 2,000 member businesses. Save big with these offers from our partners!



FROM ALIGNMENT TO IMPACT: KANSAS CITY'S NEXT CHAPTER IN PUBLIC SAFETY

Collaboration is driving progress while sharpening focus on what comes next.

➤ **K**ansas City's approach to public safety is evolving, grounded in a simple idea: no single sector can solve this alone.

Kansas City's approach to public safety is evolving, grounded in a simple idea: no single sector can solve this alone.

The Public Safety Coalition was built on that premise, bringing together business, faith, and community leaders to align strategies, elevate community voice, and drive coordinated action.

The goal is not just conversation, but transformation: a system where prevention, intervention, and enforcement work together. That shift is taking hold.

As Klassie Alcine, CEO for KC Common Good, explains, Kansas City has moved from fragmented efforts to a more coordinated, ecosystem approach. "Public safety is a shared responsibility," she said, pointing to stronger alignment across sectors and sustained investments like the Vio-



lence Prevention Fund. Those efforts are contributing to measurable progress, including declines in violent crime and lower homicide levels.

The Coalition itself has evolved alongside that progress. What began as relationship-building is now action, with deeper trust, more consistent engagement, and stronger connections between community voice and decision-making. Even so, challenges remain.

Pastor Darron Edwards, a community leader and faith representative from United Believers Community Church, cautions against mistaking momentum for mission accomplished. “We are politicizing instead of pointing to real issues,” he said. While reductions in non-fatal shootings matter, he notes that each incident still reflects deeper issues that have yet to be fully addressed.

For Rev. Edwards, the gap is execution. “Conversations are happening at the top, but we are not getting the message out the door,” he said. Strategies discussed in boardrooms are not always reaching churches, neighborhoods, and community spaces where trust is built. In a post-pandemic environment, that disconnect can slow progress.

At the same time, both Edwards and Alcine point to a clear opportunity: listen and align.

Across Kansas City, the message is consistent. Residents want safety and opportunity: resources, youth engagement, and pathways to economic mobility. Businesses want safe corridors and a stable environment for investment, while recognizing that long-term safety depends on investing in communities.

Edwards offers a straightforward path forward: meet people where they are. Convene conversations in each police district, ask residents to identify their top concerns, and align resources accordingly. The expectation is clarity and action.

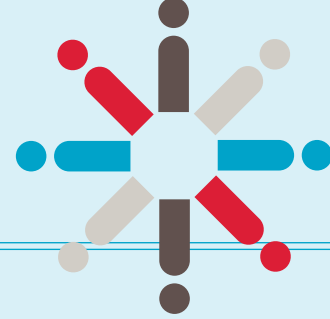
From the KC Chamber’s perspective, that alignment is essential to both community well-being and economic vitality. As President & CEO Joe Reardon has emphasized, collaboration across business, faith, and community leaders is what turns intention into impact. “As the Chamber, we desire to be that trusted entity that is a contributing part of the ecosystem,” Reardon said. “We remain committed to the Coalition because we believe that collective action and deep collaboration lead to durable, lasting progress.”

Kansas City has built a solid foundation: a coalition grounded in trust, shared responsibility, and a commitment to evidence-based solutions. The next phase is execution, ensuring alignment at the leadership level translates into results in neighborhoods.

Looking ahead, success means sustained reductions in violence, stronger and more stable neighborhoods, and prevention strategies that are fully resourced. It also means residents who feel safer and see progress in their daily lives.

Kansas City has aligned. Now comes the opportunity to lead by turning that alignment into outcomes that are seen, felt, and sustained for years to come. ▾

NEW MEMBERS



Welcome to these members who recently joined the KC Chamber.

360picKC

Ka Lai Woods
(816) 216-1809
www.360pick.com

A&B Brands, LLC

dba Fieldsville Seasonings
Pamela Fields
www.fieldsvillevflavor.com

Alira Strategies

Lauren Aleshire
(319) 573-6770
www.aliraideas.com

Atlas9

Anna Kullberg
(913) 708-8081
www.atlas9.com

AuraMed Spa & Wellness

Suzanne Gunn
(816) 705-6199
www.auramedspaandwellness.com

Bill of Rights Institute

Cole Howerton
(417) 664-3346
www.billofrightsinstitute.org

Center for Human Services

Kirstin Sopko
www.chs-mo.org

Center For Practical Bioethics

Abby Gast-Watterson
(816) 221-1100
www.practicalbioethics.org

Central Avenue Betterment Association

Edgar Galicia
(913) 281-9222
www.cabackck.org

Champion Burritos

Ernesto Aguirre
(913) 225-4949
www.championburritos.com

Chatime Overland Park

Lauren Yuen
(913) 318-0063
www.chatime.com

Chief of Staff KC

Tiffany Riggs
www.chiefstaffkc.com

Clearing For Launch Coaching

Jennifer White
(816) 516-7377
www.clearingforlaunch.com

Como Express Transport LLC

Shelia Johnson
(816) 841-9156
www.comoexpresstrans.com

Consular Corps of Greater Kansas City

Gino Serra

C-Rex Electric

Charles Allen
www.crexelectric.com

Culligan Water of Greater Kansas City

Reed Burggrabe
www.culligan.com/locations/ks/kansas-city

DaZZee IT

Nicole Artzer
www.dazzee.com

Dynamic Unity Home Care

Delshey Pearson
(816) 605-6140
www.dynamicunityhomecare.com

Easy Audio Rental & Video Walls

James Hansen
(913) 219-7475
www.easyaudiorental.com

EG Media

Estuardo Garcia
www.Estuardok.com

Elite Mobile Phlebotomy

Trish Edwards
(913) 730-2020
www.eliteimobilelaboratory.com

Emerald Hive Design

Alexandra Bojarski-Stauffer
www.emeraldhive.build

Empire Netting and Fence KC

Chyanne Doster
(913) 210-8109
www.empire-fence.com

Experitec, Inc.

Chris Helbling
www.experitec.com

Foster Wallace, LLC

April Kreikemeier
(816) 320-6810
www.fosterwallace.com

Gensler

Jamie Kluesner
www.gensler.com

Graceland University

Jennifer Matney
(541) 784-5138
www.graceland.edu

Heartland Trailways

Mark Locke
(800) 279-1734
www.heartlandtrailways.com

Hiland Dairy

Jeff Larson
(816) 921-7370
www.hilanddairy.com

Horizon Med Spa & Wellness

Scott Peters
(816) 321-1090
www.horizonmedspaandwellness.com

Howe Consulting

Jim Howe

ICT Insurance Group

Drake Brown
(913) 600-5511
www.ictinsurance.com

Ingrid Burnett

Ingrid Burnett
(816) 214-2338

Insperty

Kyle Sohn
(913) 406-6899
www.insperity.com

International Paper

Delisa Henderson-Moss
www.internationalpaper.com

It IS Personal

Holly Hoffman
(407) 340-3300
www.it-IS-Personal.com

IT-RA Icons

Rodrigo Alvarez
(816) 469-7065
www.itraicons.com

Jane Pansing Brown Law Firm

Jane Brown
(816) 985-8941
www.janepbrownkc.com

JEL Solutions

Jennifer Lund
(816) 200-0165
www.jelsolutionsllc.com

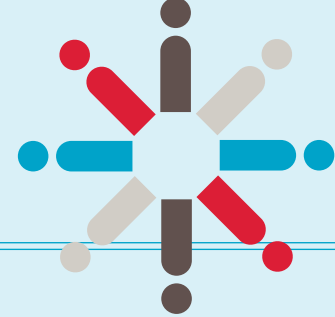
Kansas Legal Group

Brent Harkins
www.kansaslegalgroup.com

Kata Nori Hand Roll Bar

Nam Phan
(913) 909-3954
www.katanorikc.com

NEW MEMBERS CONTINUES



KC Property Connection
Nicholas Stoddard
(816) 600-4417
www.kcpropertyconnection.com

KC Skin & Wellness
Amber Lockard
(816) 768-1778
www.kcskinwellness.com

Kind Care Transportation
Abhinav Ala
(818) 648-7186
www.kindcaretransport.com

Klā Sanctuary
Jade Anderson
(816) 849-6167
www.klasanctuary.com

KP Staffing
Macee Brotherton
www.kpstaffing.com

KXW Productions
Kurt Wheeler
(215) 880-3500
www.kxwproductions.com

Life Unlimited, Inc.
Julie Edlund
(816) 474-3026
www.lifeunlimitedinc.org

Live Nation Worldwide, Inc.
Wilson Temple
(816) 702-6901
www.premium.livenation.com/morton-amphitheater

Made Mobb
Jesse Phouangphet
www.mademobb.com

Meridian Adhesives
Amy Myers
www.evansadhesive.com

Messenger Ink
Marques Bussey
(816) 914-3518
www.messengerink.com

Missouri Center for Employee Ownership
Julie Leonhardt
www.moceo.org

Mix & Pix Events KC
Steven Washington
(816) 633-2007
www.mixpixkc.com

Murrell Homes Real Estate Group
Shawna Murrell
(816) 313-8800
www.shawnnamurrell.com

Musselman & Hall Contractors, LLC
Alyssa Walz
(816) 861-1234
www.musselmanandhall.com

NINE Leather & Watch Team
Zehra Gunalp
(571) 218-9916
www.nineleather.co

Nomad Develops
Carmen Chopp
www.nomaddevelops.com

Obsidian's Pen Writers Group
Tyrone Gethers
(816) 490-7019

Pan Caliente
Silvia Miguel
(816) 778-9005
www.pancalientekc.com

Pantheon Moving
Andrew Bristow
(913) 256-5515
www.pantheonmoving.com

Pilot
Vember Conner
(415) 297-0241
www.pilot.com

Powell CWM, Inc.
Bethany Powell
(816) 373-4800
www.powellcwm.com

Powell Gardens
James Healy
www.powellgardens.org/corporate-activities

Preyer Design
Crystal Preyer
www.preyerdesign.com

Pringle Robotics
Tony Stanislav
(309) 642-8900
www.pringlerobotics.ai

Proper
Kate Ransom
www.propercannabis.com/shop-kansas-city

RAW Art
Remy Wharry
www.Rawartpaint.com, www.reabbie.com

Respira Wellness
Fernanda Whitmer
(816) 806-4969
www.respirawellnesskc.com

Sandler by True North Growth Advisors
Troy Montgomery
(816) 820-4995

Searcy Financial Services, Inc.
Cali Gillespie
(913) 814-3800
www.searcyfinancial.com

Selah Lounge
(816) 849-6167
www.klasanctuary.com/selah

She Hauled It
Jenny Muntzel
(816) 609-4259
www.shehauledit.com

Studio Six13
Eric Bosch
(816) 520-4937
www.studiosix13.com

SweatHouz - SWTHZ
Hunter Mitchem
www.sweathouz.com/power-and-light-book-now

The Barrymore Senior Living
Quintin Schneider
(816) 846-2721
www.barrymoreseniorliving.com

The Boujee Baker
Joyce Watts
(816) 800-4066
www.boujeebakerkc.com

The Franchise Consulting Company
Angie Salmon
(913) 558-8975
www.thefranchiseconsultingcompany.com

The Gilded Page
Lucy Kull
www.gildedpages.com

The Guild LLC
Katelyn Wiseman
(816) 471-8550
www.theguildkc.com

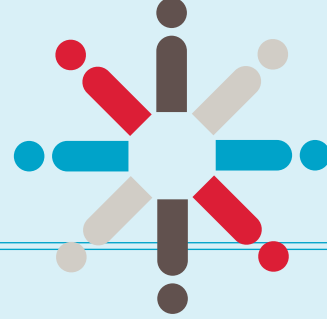
The Kansas City Club
Bobby Morris
(816) 352-5697
www.kansasclub.com

The National Museum of Toys and Miniatures
Cole Braun
(816) 235-8000
www.toyandminiaturemuseum.org

The Whiskey Ranch Experience
Brian Penny
(816) 661-9899
www.whiskeyranch.com/experience

There's Just Something About Kansas City, Inc.
Sarah McEnereny-Boal
www.somethingaboutkc.org

▶ NEW MEMBERS CONTINUES



Thorp Controls Automation Solutions

Zachary Pitts
www.tcas.com

Toast, Inc.

Luci DeLoach
www.toasttab.com

TWA Accounting & Business Solutions

Tania Williams
www.twa-accountingservice.com

United Direct Solutions

Todd Barzily
www.udssolutions.com

Uzazi Village

Shalese Clay
(816) 541-3718
www.uzazivillage.org

Vader Security

Alex Downs
(816) 705-0181
www.vadersecurity.com

Van Go, Inc.

Kathryn Clark
(785) 842-3797
www.van-go.org

Variety KC

Marc Harrell
(913) 308-4042
www.varietykcc.org

Visit Kansas City Kansas

Alan Carr
(913) 321-5800
www.VisitKCK.com

Walser Genesis of Kansas City

Tucker Walser
(913) 704-6203
www.genesiskansascity.com/about-us

War Horses for Veterans

Sarah Davis
(913) 565-5997
www.whfv.org

WestPac Wealth Partners

Garrett Gates
(913) 578-3383

Wild Child

Sarah Oliva
(816) 883-8893
www.wildchildresale.com

Workday

Daniel Allegri
(816) 585-2883
www.workday.com/en-us/homepage.html

PRESIDENT'S CIRCLE & LEADERSHIP CIRCLE

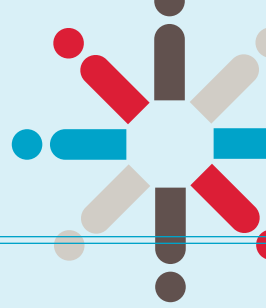
The following companies recently joined or renewed their commitment to the KC Chamber's Leadership Circle.

Amazon	DD Ranch Leawood	neering & Technology	Temp-Con, LLC
ArtsKC - Regional Arts Council	Donnelly College	Liquid Mobile	The Binder Firm
AT&T, Inc.	Easterseals Midwest	Made in KC	The Hope Center
Bardavon Health Innovations	Executive Hills, Inc.	Mariner	The National WWI Museum and Memorial
Benedictine College	Gates Bar-B-Q	McDowell Rice Smith & Buchanan PC	The Roasterie, Inc.
Bennett Packaging of Kansas City, Inc	Graceland University	Mid-Continent Public Library	The Whiskey Ranch Experience
BHC, LLC, a Pape-Dawson Company	Greater Kansas City Community Foundation	MPH Dining DBA Culver's	Thrive Restaurant Group
Big O Tires	HDR Engineering, Inc.	MRIGlobal	ThrottleNet
BioNexus KC	High Aspirations, Inc.	Multistudio	T-Mobile Center
BNIM Architects	Johnson County Government	Newmark Zimmer	Tnemec Company, Inc.
Busey Bank	JVM Realty	Origin Hotel Kansas City	Unbound
Capital One Café	Kansas City Area Development Council	Ozark National Life	Unified Government of Wyandotte County/Kansas City Kansas
Cascade Hotel Aloft Hotel - on the Country Club Plaza	Kansas City Board of Public Utilities	Pilot	Uzazi Village
Central Exchange	Kansas City Marriott Downtown	Populous	Wagner Logistics
Chase	Kansas City Mavericks	Resurrection Leawood	Westin Kansas City Hotel at Crown Center
Cleveland University - Kansas City	KMO Burger, LLC dba Whataburger Restaurants	Rockhurst University	WSP USA Inc.
Comprehensive Mental Health Services	Langley Recycling, Inc.	Shamrock Trading Corporation	Wyandot Behavioral Health Network
Cooling & Herbers, P.C.	Lead Bank	Shawnee Mission School District	YMCA of Greater Kansas City
Copaken Brooks	Linda Hall Library of Science, Engineering & Technology	Sosland Publishing	
Dairy Farmers of America, Inc.		Sporting Kansas City	
		Stifel Nicolaus & Co.	
		Stryten Energy KCMO	

The following companies recently joined or renewed their commitment to the KC Chamber's President's Circle.

Advantage Tech	Ernst & Young LLP	Kansas City University	Sandberg Phoenix & von Gontard P.C.
AdventHealth	Every	Kansas State University	She Hauled It
Aetna	FairWave Coffee Collective	KC Health Collaborative	Shook, Hardy & Bacon L.L.P.
American Cancer Society KC/WMO Region	Fiorella's Jack Stack Barbecue	Kessinger/Hunter & Company, L.C.	Southwest Airlines Co.
American Century Investments	First Interstate Bank	KPMG LLP	Spencer Fane LLP
Americo Life, Inc.	FleishmanHillard	KVC Health Systems, Inc.	Stinson LLP
Aon PLC	Forvis Mazars	Lamp Rynearson	Tension Corporation
Arvest Bank	Foulston Siefkin LLP	Landmark National Bank	The Builders, a chapter of the AGC
Ash Grove Cement Company	Garmin International, Inc.	Lathrop GPM LLP	The Miller Group
Bank Midwest	Grant Thornton LLP	Lewis and Clark Information Exchange	The Transition Academy
Bank of America	Harvest Productions	Life Unlimited, Inc.	The University of Kansas
BlueScope Buildings North America	HCA Midwest Health	LINC	The University of Kansas Health System
BNSF Railway Co.	Health Forward Foundation	Lockton Companies, LLC	TREKK Design Group, LLC
BOK Financial	Heartland Coca-Cola Bottling Company	Loews Kansas City Hotel	Turner Construction Company
Canadian Pacific Kansas City	Heavy Constructors Association of Greater Kansas City	MarksNelson, a Springline company	U.S. Bank
CBRE	HNTB Companies	Mazuma Credit Union	UMB Financial Corporation
Cerris	Husch Blackwell LLP	Menlo	Union Pacific Railroad
City of Kansas City, Missouri	JE Dunn Construction Company	Metropolitan Community College	University Health
Crux KC LLC	Kansas City Current	Oracle	University of Missouri-Kansas City
DeMarche	Kansas City Life Insurance Company	Panasonic North America	VanTrust Real Estate, LLC
Dentons US LLP	Kansas City National Security Campus, managed by Honeywell FM&T	PNC Bank	Vibrant Health
EAG Advertising & Marketing		Prospect Business Association	
ECCO Select Corporation		REACH Healthcare Foundation	
Enterprise Bank & Trust		Saint Luke's	

MILESTONES



The following companies recently celebrated membership milestones.

5 years

Alzheimer's Association - Heart of America Chapter
American Red Cross of Northwest Missouri
Apex on Quality Hill Apartments
Appliance 911
CBRE
Cenetric, Inc.
Cooper's Hawk Winery & Restaurants
CyDex Pharmaceuticals, Inc.
FairWave Coffee Collective
Fort Leavenworth
Goldberg Group Architects
JVM Realty
Kocher + Beck
Liquid Mobile
Mid American Credit Union
Midwest Recovery Centers
Perspective Architecture + Design
Pigwich
Piper School District
Prime Social
Russell Stover Candies, Inc.
Startland
Stryten Energy KCK
Stryten Energy KCMO
Summit on Quality Hill Apartments
Thrasher Foundation Repair
Veterans Community Project

10 years

531 Grand
Consulate General of Canada
Crux KC LLC
Donutology
DRAW Architecture + Urban Design, LLC
DuBois Consultants Inc
El Centro
Hope House
IVX Health
KVC Health Systems, Inc.
Leinenkugel's Kansas City
Linda Hall Library of Science, Engineering & Technology
Mosaic Ultra Lounge
Nidec Motor Corporation
No Other Pub by Sporting KC
PBR Big Sky
PHR Holdings, LLC
Plexpod
Pro Athlete, Inc.
Raising Cane's
Shark Bar
South Kansas City Alliance

15 years

American Cancer Society KC/WMO Region
Aon PLC
Clinical Reference Laboratory, Inc.
Kansas State University Olathe
Mid-Continent Public Library
Panera Bread
Pierpont's at Union Station
Rand Construction Company
Saint Luke's East Hospital
Urban League of Greater Kansas City
Wayside Waifs, Inc.

20 years

Allied Materials & Equipment Company
Axiom Strategies
Big Brothers Big Sisters of Greater Kansas City
Helzberg Foundation
Mid-State Aerospace, Inc.
Paris Brothers Inc.
The National WWI Museum and Memorial
T-Mobile Center

25 years

BioNexus KC
Centerpoint Medical Center/HCA Midwest Health
ER Marketing
Fairfield Inn - Downtown Union Hill
Midmark Corporation
National Association of Intercollegiate Athletics
Overland Park Regional Medical Center/HCA Midwest Health
Purpose Technology Group
The W. Evans Company

30 years

Agenda: USA, Inc.
Concrete & Masonry Restoration, Inc.
DDI Commercial, Inc.
Excelsior Springs Job Corps Center
Hoefer Welker
Kansas City Catering, Inc.
KC Water
KCWE-TV-Channel 29/Hearst Television Inc.
Ridpath Creative Partners LLC
The Greater Kansas City Sports Commission & Foundation

35 years

Turner Construction Company

40 years

Kaw Valley Engineering, Inc.
Johnson County Airport Commission

45 years

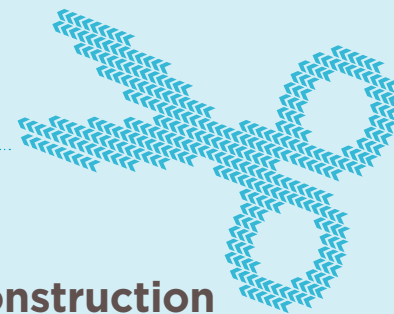
Americo Life, Inc.
Kenton Brothers Inc. Systems for Security
Missouri Department of Higher Education and Workforce Development--Missouri Career Center
Modern Litho Kansas City

50+ years

University Health (50)
Veterans of Foreign Wars of the United States (50)
Amy's Hallmark, Crown Center (51)
A.L. Huber General Contractor (52)
Delden Manufacturing Company (52)
MRIGlobal (52)
Newmark Zimmer (53)
Celebrity China & Crystal (53)
Westin Kansas City Hotel at Crown Center (54)
BNIM Architects (55)
Hunt Midwest (56)
Avila University (57)
Crown Center (58)
Lockton Companies, LLC (58)
Saint Luke's (58)
Saint Luke's Hospital of Kansas City (58)
Union Station Kansas City, Inc. (60)
Metropolitan Community College (61)
Lundmark Advertising + Design (63)
Gallagher Benefit Services, Inc. (65)
American Century Investments (67)
Kansas City Shippers Association, Inc. (67)
Nettles Construction Solutions, Inc. (67)
Holliday Sand & Gravel Co. (68)
Wagner Logistics (69)
Foley Equipment (71)
Superior Bowen Asphalt Co., LLC (71)
Grant Thornton LLP (73)
Tnemecc Company, Inc. (73)
University of Missouri-Kansas City (75)
Kansas City National Security Campus, managed by Honeywell FM&T (77)
United Way of Greater Kansas City, Inc. (78)
HNTB Companies (79)
Forvis Mazars (80)
Shelton Travel Service, Inc. (81)
The Builders, a chapter of the AGC (84)
Kessinger/Hunter & Company, L.C. (85)
Van Osdol, P.C. (87)
Ernst & Young LLP (99)
Risk Strategies Company (99)
Spencer Fane LLP (105)
AT&T, Inc. (106)
Stinson LLP (108)
Burlington Northern Santa Fe Intermodal Operations (109)
UMB Financial Corporation (109)
Husch Blackwell LLP (110)
Lathrop GPM LLP (110)
Ash Grove Aggregates, Inc. (112)
Ash Grove Cement Company (112)
Bank of America (112)
BNSF Railway Co. (112)
Canadian Pacific Kansas City (112)
Country Club Plaza (112)
Geodis Logistics, LLC (112)
Kansas City Terminal Railway Co. (112)
KPMG LLP (112)
Shook, Hardy & Bacon L.L.P. (112)
Tension Corporation (112)
Commerce Bank (118)
Everbly (126)

RIBBON CUTTINGS

Highlighting the growth of Greater Kansas City



Goodwill Industries Blue Springs



On April 2, 2026, community members, staff, and supporters gathered outside the newly remodeled **Goodwill Industries** store in Blue Springs to celebrate with a ribbon-cutting. The moment underscored the organization's continued investment in creating welcoming retail spaces that fuel opportunity.

KC Skin & Wellness



Delivering accessible and affordable skincare solutions, **KC Skin & Wellness** helps clients enhance their natural beauty through personalized treatments and care. The location on Barry Road in the northland offers advanced technologies and counseling on self care and radiant skin.

Parrish & Sons Construction



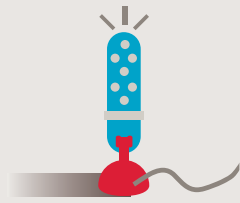
Parrish & Sons Construction celebrated 10 years in business and the launch of the Parrish Cares initiative with a KC Chamber ribbon cutting. Parrish Cares is a new nonprofit with a mission to build a skilled workforce by training underserved individuals for sustainable careers in construction.

Prime IV Hydration & Wellness



The KC Chamber helped **Prime IV Hydration & Wellness - Burlington Creek** celebrate their grand opening. From IV hydration to wellness support, Prime IV is ready to help the community feel its best from the inside out.

GOOD NEWS



People

Research Medical Center, part of **HCA Midwest Health**, named Lowell Ebersole, DO, as Chief Medical Officer. In this role, Dr. Ebersole will oversee clinical operations, drive quality and patient safety initiatives, and foster physician engagement across the hospital. The hospital also announced the appointments of Venus Buckner, MA, BSN, RN, as Vice President of Quality, and Tanner Couch as Vice President of Operations.

Allen Dillingham has been appointed Chair of the Missouri Technology Corporation (MTC). Allen has served on the MTC Board since 2022 and has held several committee and leadership roles within the organization. He is currently the Director of Government Relations for **The Builders**, a chapter of the Associated General Contractors of America.

Park University announced the promotion of Paul Burkhalter to the role of director of campus safety, and the promotion of John Bower to the role of senior director of facilities and operations. Burkhalter has been a campus safety officer for Park since July 2020, following a 25-year career with the Kansas City Police Department. Bower joined Park in August 2017 as the manager of facilities maintenance and grounds.

MarksNelson, a Springline company, announced two of its tenured employees – Scott Bruce and Steve Etcher – have been named as the firm’s newest partners. Bruce has been elevated within the Tax department, and Etcher in the Location Strategies department.

The **Agricultural Business Council of Kansas City** will recognize Robert Petersen and Dr. David Nichols with the Jay B. Dillingham Award for Agricultural Leadership and Excellence, honoring their decades of service, leadership, and lasting contribu-

tions to agriculture in the Heartland. The Council will formally present the awards at its Annual Awards Luncheon on May 13.

Miscellaneous

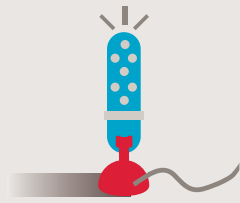
The Missouri Hospital Association (MHA) honored **NKC Health** with the 2025 Aim for Excellence Award for its outstanding clinical outcomes. NKC Health’s Code Blue Committee implemented evidence-based interventions for all team members. These efforts improved adherence to American Heart Association-recommended care by 43%, shortened hospital stays and significantly increased post-cardiac arrest survival to discharge. Established in 2016, the Aim for Excellence Award annually honors Missouri hospitals for their advancement and outcomes related to progress toward the Triple Aim – better health, improved care and lower cost.

KC Tech Council launched an updated brand, refreshed logo and visual identity, website and moved to a new location at 710 Central Street, Suite 200, which establishes collaboration with **KC Digital Drive**.

U.S. News & World Report, the global authority in hospital rankings and consumer advice, has named **AdventHealth Shawnee Mission** as a 2026 High Performing hospital for Maternity Care. This is the highest award a hospital can earn as part of U.S. News’ Best Hospitals for Maternity Care annual study, now in its fifth edition. For the 2026 edition, approximately 900 hospitals nationwide submitted maternity data for evaluation.

Spencer Fane announced that New York City-based Golenbock Eiseman Assor Bell & Peskoe, a recognized full-service 50-attorney law firm, combined with the firm. The combination simultaneously provides Spencer Fane entry into the largest legal market in the world while also giving Golenbock professionals access

GOOD NEWS



to a combined firm of 700 attorneys and 31 offices across the nation. Spencer Fane later announced plans to combine with Conner & Winters, LLP, a Tulsa-based firm with more than 75 attorneys and a strong reputation throughout the Southwest.

Labconco Corporation is excited to mark its 50th anniversary of biosafety cabinet innovation by adding another BSC to its portfolio. The new Prism Class II, Type A2 Biosafety Cabinet builds on a trusted legacy of engineering excellence in laboratory containment – a legacy rooted in the company’s expertise in ventilation, airflow and safety.

Great Jobs KC announced it has been selected as a recipient of the Women in Apprenticeship and Non-traditional Occupations (WANTO) grant from the U.S. Department of Labor. This two-year, \$680,000 award will help bridge the gender gap in high-demand, high-

wage industries across the Kansas City region such as advanced manufacturing, construction, and commercial truck driving (CDL). Great Jobs KC has also announced a transformative three-year, \$3,845,500 grant from the Patterson Family Foundation. This investment will allow Great Jobs KC to expand its proven tuition-free skills training and support model beyond the Kansas City metropolitan area and into Ford County, Kansas, and Nodaway County, Missouri as Great Jobs.

HCA Midwest Health and the **Kansas City Fire Department** announced a new Emergency Medical Services (EMS) and Paramedic Medical Direction partnership with the health system’s Research Medical Center, a Level I Trauma Center, strengthening pre-hospital emergency care across Kansas City and the region. Under the partnership, Research Medical Center, the No. 1 hospital in Missouri for stroke care and a nationally recognized burn center, will serve as

LIBERTY LEVEL 2026 INVESTORS



GOOD NEWS

Continued...

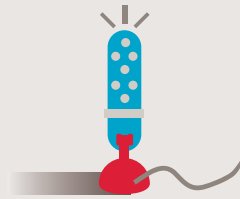
KCFD's EMS Medical Direction provider, delivering medical oversight of EMS and paramedic protocols, as well as on-scene, pre-hospital medical direction for first responders.

In 2025, **Midwest Transplant Network** honored the legacies of 371 donor heroes through their gifts of donation and provided 1,080 organs for transplant. In 2024, MTN transplanted 1,075 organs from 399 donor heroes. It was the first time MTN reached and surpassed one thousand organ transplants in a single year. By comparison, MTN had 13 organ donors in 1972.

The **National Museum of Toys and Miniatures** at 5235 Oak Street is hosting a new exhibit. *Native Arts in Miniature* explores diverse tribal traditions, family heritage, and creative innovations expressed by Native American artists working in miniature.

Nurture KC has launched a new Healthy Start Baby App, available within the Bump2Baby360® platform, to better support families enrolled in its Healthy Start program across the Kansas City metropolitan area. In several urban neighborhoods throughout the KC metro, infant mortality rates remain higher than state and national averages due to long-standing inequities in access to care, resources, and support. The Healthy Start Baby App is part of Nurture KC's proactive approach to addressing these disparities by putting trusted information and meaningful connections directly into families' hands.

Rockhurst University will receive \$1.031 million in federal Community Project Funding to help build new programs and facilities to educate future generations of tech and AI leaders in the Kansas City region. House Resolution 6938, the Commerce, Justice, Science, and Related Agencies Appropriations Act 2026,



BRONZE LEVEL 2026 INVESTORS



GOOD NEWS

Continued...

was signed into law Jan. 23. The grant funding will fund capital improvements and personnel to expand the University's tech-focused degree programs, including artificial intelligence, cybersecurity, information systems, computer science and financial analytics.

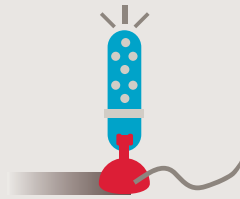
Several prominent Kansas City executives have launched a chapter of the **American Cancer Society's** CEOs Against Cancer initiative in Kansas City. The Kansas City chapter of the American Cancer Society's CEOs Against Cancer initiative is proudly becoming the 20th chapter to join this impactful national movement.

Country Club Plaza, Kansas City's historic outdoor shopping and dining destination, is welcoming Los Angeles-based premium activewear brand ALO YOGA (ALO) to its lineup of unique, first-in-market retailers. The store, opening soon at 422 Nichols Road, Kansas

City, Missouri 64112, marks the brand's first location in the Kansas City metro area.

The **American Jazz Museum** (AJM) released renderings and floor plans for the 2026 AJM Restoration Project after the City Council of Kansas City, Mo, voted unanimously to approve \$3.2 million in public funds. AJM will contribute an additional \$300,000, bringing the total project investment to \$3.5 million - a transformational investment not seen at AJM in over 25 years.

Henderson Companies, the parent company of Henderson Engineers and Henderson Building Solutions, has launched a new service that will help clients make informed capital investment and operational decisions using building performance data and decades of institutional expertise. Henderson's Strategic Consulting service engages owners, architects, general



SILVER LEVEL 2026 INVESTORS



managed by **Honeywell FM&T**



LOCKTON[®]

UNCOMMONLY INDEPENDENT

McCOWNGORDON
C O N S T R U C T I O N

GOOD NEWS

Continued...

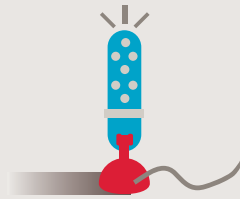
contractors, financial institutions, and other key project stakeholders early in the planning process to help determine where and when to invest resources that will maximize the lifecycle value of these assets. The service is geared toward higher education, healthcare, data center, hospitality, retail, and industrial facilities.

Spectrum announced the expansion of its fiber broadband network to bring Spectrum Internet, Mobile, TV and Voice services to more than 2,000 additional homes and businesses in previously unserved or underserved areas of Jackson County, including locations near Kansas City, Independence and Blue Springs. The multi-year rural construction initiative is driven by more than \$7 billion in private investment from Spectrum and will ultimately add an additional 100,000+ miles of fiber network infrastructure and deliver symmetrical and multi-gigabit speeds to more

than 1.7 million new locations across the country.

Whether you're in the market for a newly constructed home or looking to purchase your very first, attending the Spring Parade of Homes, April 25 through May 10, offers a firsthand look at today's best offerings. Presented twice a year by the **Home Builders Association of Greater Kansas City**, the spring parade will feature 317 homes in seven counties built by 96 of the KC area's finest builders. Types of homes featured on the parade will include townhomes, villas, 55 maintenance-provided entries and single-family homes.

Holmes Murphy released its 2025 Community Impact Report, announcing an increase in impact and giving. 54,058 volunteer hours were donated and 9,692 time off hours used, representing a 125% increase in volunteerism over 2024. 473 nonprofits were impacted.



GOLD LEVEL 2026 INVESTORS



GOOD NEWS

Continued...

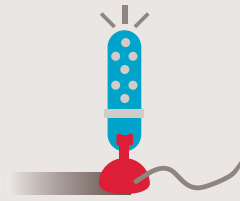
The direct giving program reached \$1.79 million and their **United Way** campaign hit an all-time donation record of more than \$754,000 companywide.

Lead to Read KC hosted its annual Reading Rally at the **T-Mobile Center**, where Patrick Mahomes read aloud to more than 3,000 students and shared how reading influenced his success. The event was the culmination of Lead to Read KC's year-long Read for 15 partnership with the 15 and the Mahomies Foundation and made possible through the support of **Kiewit**.

Loews Kansas City Hotel announced the Alchemy by Loews brand-wide beverage program. The program comes to life through select beverages featuring regional ingredients, seasonal botanicals, and destination-driven flavors that reflect the hotel's surroundings.

Foley Equipment, the Caterpillar dealer for Kansas and forty counties in Missouri for more than 85 years, announced that it will be expanding by adding a new facility in Missouri at Lake of the Ozarks. The new Foley facility will include rental and sales for the construction business. The new facility is conveniently located on Highway 54 between Osage Beach and Camdenton.

Liquid Wellness & IV, a rapidly growing leader in IV hydration, wellness, and longevity, announced its continued expansion with new offices and a retail location at 11010 Metcalf Avenue in Overland Park, KS. The new location will feature a modern retail experience offering supplements, Peptides, Nutrafol for hair growth, and a red light, along with services including IV hydration, medical weight management, hormone replacement, skin care, and telehealth.



TITANIUM LEVEL 2026 INVESTORS



PLATINUM LEVEL 2026 INVESTORS



Kansas City

An Independent Licensee of the Blue Cross and Blue Shield Association

Community America[®] CREDIT UNION



FOR A GREATER KANSAS CITY

Union Station
30 W Pershing Road
Suite 301
Kansas City, Missouri 64108

**For membership information,
call (816) 221-2424
or email info@kcchamber.com**

GROW KC Business is produced by the Greater Kansas City Chamber of Commerce Marketing Department for Chamber Management Services, LLC (a wholly owned subsidiary of the KC Chamber). Information in this publication is carefully compiled to ensure accuracy. However, neither the KC Chamber nor CMS assume responsibility for accuracy. Contents are copyrighted by the Greater Kansas City Chamber of Commerce.
Design solutions for GROW KC Business provided by KC Chamber member Ridpath Creative Partners, LLC, www.ridpathcreative.com.

What's *Your* Story?

Your story. Your stage.

Let's fill it.



Ridpath Creative Partners LLC • Kansas City, Missouri
roger@ridpathcreative.com • ridpathcreative.com • 816.792.9669

EST. 2002 • YEAR 25